

STAMPEDE



ONCE YOU PULL A MERHOW YOU WON'T PULL ANYTHING ELSE.

Stampede Décors



Exterior Standard Features

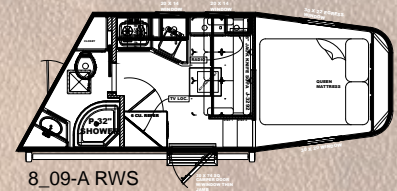
- Aluminum sidewall posts, top rail, rear hoop, bottom rail.
- 40" Stall setting (Measured center of hinge pins)
- 4" Cross members, typically on 14" centers.
- Extruded aluminum floor below LQ and horse area.
- One piece aluminum roof.
- White, .040 exterior aluminum skin. (Optional color upgrades) White
- Extruded aluminum sides in horse area.
- Horse area walls and ceiling lined with white aluminum.
- Drop down feed windows standard on all head windows.
- Drop down feed windows standard on all escape doors.
- Escape door standard on 3 horse and larger models.
- Paddle latch on escape door. (3 horse and larger models)
- Butterfly style latch on escape door (3 horse and larger)
- Flip-up camper step at escape door (3 horse and larger)
- Lower section of horse area walls lined with ballistic liner.
- Padded chest and butt straps.
- Padded dividers with air flow shoulder sections.
- Single hydraulic jack. (dual leg optional).
- .100 Aluminum kick plate on butt wall behind ballistic liner sheet.
- Rubber mats in horse area and rear tack.
- (4) Aluminum wheels & steel wheel for spare.
- Drive on trailer tire changing assistant.
- Lower stud divider on front divider.
- Walk thru door between LQ and horse area.
- Tapered inside wheel wells (8 wide models only).
- 18" deep Mangers on all 8 wide models. Includes (1) Skin colored manger door for each stall except front stall with escape door.
- One 12V light between adjoining manger doors in mangers.
- 8 Wide models with mangers have ply-felt lining on inside of mangers.
- Drain and drain tube in all units with mangers.
- Lockable aluminum battery box.
- 0° Dexter EZ-Lube torsion axles W/ electric brakes on all wheels.
- (2) interior & (2) exterior horse ties standard per horse stall.
- (1) 12V load light over the rear horse loading door.
- (1) 12V load light over the horse area on the road side.
- (1) 12V load light over the horse area on the curb side.
- (1) Saddle rack and saddle rack location. (in rear tack).
- (1) Saddle Boss per horse stall.
- 4 Tier aluminum blanket bar installed on rear tack door.
- (1) set of 8 heavy duty bridal hooks. (Installed on rear tack sidewall).
- Square corner camper door with screen to the LQ area.
- Flip up camper step standard at camper door.
- Feed bag rings standard in front stall (8 wide models).
- (1) 2 Way roof vent per horse stall.
- Bauer cam bar locks on rear doors & (escape door when equipped).
- Collapsible rear tack with tie-back.
- Ply-Felt on rear road side door & road side wall of rear tack.
- (1) 12V Light in the rear tack. (switched with stall lights)
- (1) Aluminum brush box installed on rear road side door in tack.
- Full height, 60/40 doors at rear of trailer.
- Wrap-around hinges on rear doors with a hold back per door.
- Radius corner window with bar guard on hip side (1) per stall.
- Window with bar guard on rear curb side door.
- Drip rail above rear doors.
- Rubber bumper under both rear doors.
- Models with 6' slide-out contain (2) end windows, (1) Picture window and a slide-out awning.
- Models with 9' slide-out contain (1) end window, (1) Picture window and a slide-out awning.
- 12V Exterior patio light and under goose-neck light.
- LED clearance lights (including upper and lower)
- (2) Sets of LED stop/tail lights.
- 7 Way bargeman cord for trailer lights.

- Aluminum hook to hold trailer light cord to road side gusset area.
- Break-away emergency brakes switch.
- Coupler designed for 2 5/16" ball and safety chains.
- 2 Year Merhow living quarters warranty.
- 8 Year warranty on the structure.

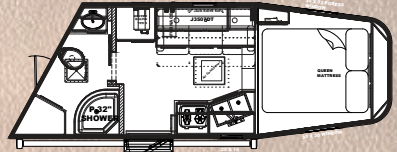
Interior Standard Features

- Solid wood cabinet faces.
- Solid wood flat panel cabinet doors with Euro style hinges.
- Crown molding in the main LQ, Kitchen and front bunk.
- Exterior Standard Features
- Picture frame style window rings.
- Decorative panel ceiling with matching batten trim.
- Soft-touch walls with lower wainscot in main LQ & Bathroom.
- Soft-touch walls with lower wainscot in slide-out.
- Soft-touch door panel on camper & walk-thru door.
- Fabric wrapped valance with solid wood ends.
- Pleated, night only shades on all windows.
- Kitchen back-splash to be laminate to match the counter-tops.
- Overhead cabinet above the seating area. (based on floor-plan).
- Carpeted front bunk floor and step tops.
- Linoleum floor in main LQ and bathroom.
- Flat panel insert for refrigerator front.
- All slide-out models standard with flush floor slide.
- (1) 120V exterior outlet near the camper door.
- TV Prep locations per floor plan. (include 120V & coax for TV antenna).
- 12V lighted grab handle beside camper door.
- Powered awning with LED light strip. (Size varies by model.)
- 3 Way switching for stall lights. (Bathroom and rear hoop).
- Drawers in the kitchen. (When possible).
- Single seating models standard with a sofa only and dual seating models standard with one sofa and one dinette.
- 120 Volt outlet at the head of the bunk on road & curb sides.
- Sconce lights at the head side of the bed.
- 12 Volt LED ceiling lights in the bunk, main LQ, and bathroom.
- 12V light on bottom side of the overhead cabinet @ seating area.
- 12V light on bottom side of the kitchen overhead cabinet.
- White shower pan and wall liner with opaque shower door.
- Foot flush RV toilet.
- Sky-dome above the shower.
- Towel bar and toilet paper holder in bathroom.
- Stainless steel sinks for the bathroom and kitchen.
- High velocity vent fan with rain sensor in the bathroom.
- Satellite inlet connection for use with portable satellite.
- AM/FM/CD/DVD radio with inside and outside speakers.
- TV antenna with booster.
- 32" Smart TV (Except 8_12.5B and 7 wide models get 24" Smart TV)
- 120V outlet near kitchen and bathroom vanities.
- 3 way switch for bunk lights.
- 12V USB charger near kitchen area.
- RV Queen mattress in the front bunk.
- Built in microwave.
- 3 cube or 6 cube refrigerator. (Based on floor plan.)
- 2 burner, recessed cook-top with glass top.
- 19,000 BTU, LP furnace.
- 13,500 or 15,000 BTU air conditioner. (Based on floor plan.)
- Ducted air conditioning on all units.
- 6 Gallon direct spark ignition water heater. Dual 12V deep cycle batteries with battery cut-off switch.
- Dual 20# LP tanks with regulator and switch over valve.
- Under belly fresh water tank. (38 gallons)
- Gray water waste tank. (35 gallons)
- Black water waste tank. (35 gallons)
- Smoke/CO/LP detectors & Fire extinguisher.

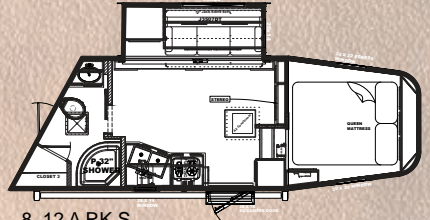
- Outside water spigot.
- Sewer hose and holder under the front bunk.
- Low point drains for hot and cold water lines.
- Water heater by-pass valve
- 12 Volt water pump with on demand system.
- 30 amp, 120 volt power distribution center.
- Removable shoreline cord.
- 120V to 12V power converter.
- 3rd Party certification. (TR Arnold)



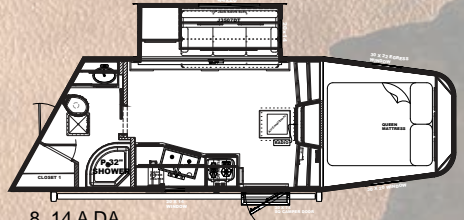
8_09-A RWS



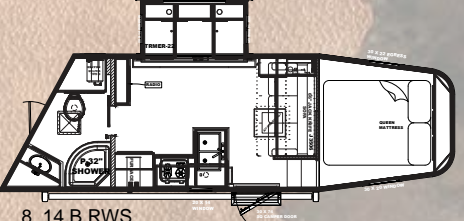
8_10-A FK-NS



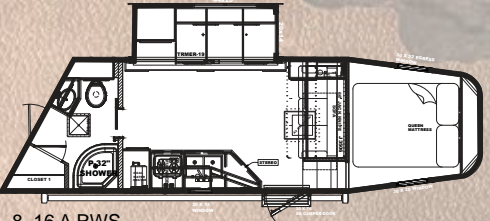
8_12-A RK S



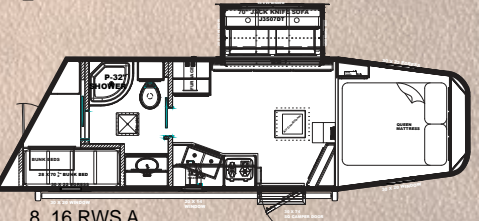
8_14-A DA



8_14-B RWS



8_16-A RWS



8_16-RWS A

Although we do our best to ensure all standards are accurate, it is possible that there may be errors or standards may be altered due to how a specific trailer is quoted. Merhow does not accept responsibility for errors or alterations due to a specific unit.

Stampede Options

Bathroom Options

- Upgrade the standard toilet to a porcelain toilet. (White porcelain toilet)

Generator and Electrical Service Options

- Generator box on the roof (Includes box 3' platform. For use with Generator selections.)
- Generator pre-wire. (To the front side of the rear tack, located in angle overhead metal)
- Gasoline gauge near the fuel fill on the exterior of the trailer
- 4.0 Gasoline generator. (Includes under belly fuel tank and transfer switch Generator mounted on the roof.)

Kitchen Options

- Upgrade the standard microwave to a convection microwave
- Add a sink cover to the kitchen sink. Covers each bowl. (Price is per bowl cover)
- Upgrade to a 3 burner recessed oven from the recessed 2 burner cook-top

Seating Options

- Delete the sofa from the base package and replace with a dinette
- Theater seating in lieu of standard sofa. (Only available in the slide-out and replaces the dinette that is in the slide-out.)

Décor Options

- Electric fireplace. (Limited to select models only)
- Mirror with western star buttons
- Western star style buttons on counter-top edges.

Plumbing upgrades.

- Upgrade the water heater to a 10 Gallon, DSI Water heater. (Limited to select models.)
- Upgrade the DSI water heater to a gas/electric water heater
- Black tank rinse assist

Heating, cooling, venting and additional insulation options.

- Upgrade the air conditioner to a 15,000 BTU from the 13,500 BTU
- Add an air conditioner vent thru partition wall behind the LQ

Exterior skin colors and exterior appearance options.

- Exterior skin color. Select a color (Calculated per foot of trailer (White)
- Stainless steel nose wrap. (In lieu of skin color nose wrap)

Axle, wheel and tire options.

- Axle upgrades (Tandem 6,000 pound axles)
- Wheel and tire selection (16", 8 lug Clear aluminum wheels with Westlake range "E" tires and 1/2" studs (ST235/80R16)

Graphics options.

- Exterior Graphics package (Package size based on overall trailer length)

Exterior options.

- Flip up step at the rear tack. (Not available with any rear ramp option.)

Horse area and tack options.

- Additional saddle seats to the standard saddle rack.
- Additional set of heavy duty bridal hooks. (Set of 8 hooks, location to be called out in trailer option location section.)
- Cobalt flooring in lieu of rubber in the horse area.
- Upgrade to a solid aluminum tube butt bar.
- Upgrade to a solid aluminum tube Chest bar.
- Additional brush box
- Upgrade the horse area lights to the larger high intensity LED lights).

Ramps, hay-rack and hay-pod options.

- Standard hay rack, with skin color on sides. Includes ladder.
- Enclosed hay pod. Skinned to match trailer. Includes ladder & 3' walk platform.
- Upgrade the standard ladder to a pull-out ladder
- Ramp over rear doors
- Add a 3' wide elevated platform with ladder on the roof, at the rear of the trailer. (Includes standard ladder)

Jack options.

- Upgrade from single hydraulic jack to dual leg hydraulic jack. (With dual control switch).

Additional door and window upgrade options.

- Add an access door in the first stall of a 2 horse trailer. (Limited by model), includes drop down feed window and paddle.



One piece Aluminum Stall Dividers



Aluminum Blanket Bars



www.merhow.com
Office - 269.483.0010
Fax - 269.483.0030

DEALER

8 Year Structural Warranty and 2 Year Merhow LQ Warranty

Production information and photography are as accurate as possible at the time of production. Colors and finishes are photographic representations and may appear different when actually viewing materials and finishes. Some features shown are optional, prices and specifications are subject to change without notice.



Follow us on Social Media

Printed 05/2024